

→ Index, Type and Multiple Generations of Bull Dams

They show up high on the charts and some of the finest daughters of international popular sires like Shottle, Snowman, Jeeves and Observer descend from this family. The spotlight cow of this article is Kevrel Shottle May Excellent-93 DOM.

Kevrel Shottle May Excellent-93 DOM descends from a deep pedigree with multiple generations of bull dams and great brood cows. Many of these cows marked the periods in which they were active. Today, the cow family has spread across the globe and several descendants are likely to start their own legacy.

To further illustrate, this family produced the No. 2 gRZG Freddie son, Franklyn at Masterrind, with an impressive gRZG of +145. Also one of the highest homozygous polled proven bulls in the breed, Ostretin Magua PP *RC and one of the highest polled flush-age heifers, Pine-Tree 4890 Casta 5660 *PO with a GTPI of +2304, owned by Pine-Tree Dairy, Ohio, U.S.

From the start

The connecting link to all the exciting animals mentioned above is the Gold Medal Dam and Dam of Merit, Da-Net Angie Leadman Excellent-92 2E.

"This is our best homebred family extending back to when my dad started dairy farming in the 50s. The family always gives loads of milk with consistently wide, beautiful udders. Our first A.I. contract ever was on the Shottle May's third dam, Da-Net Angie Leadman Excel-

lent-90 and over 284,316 lbs of milk lifetime. The farm prefix changed from Da-Net to Brandt-View about 20 years ago. The family includes Global Cow of the Year nominee, Brandt-View Manfred Miss and many A.I. sons including Hefty, Munster, Bigtime, Director and Police," shared Daniel Brandt, Brandt-View Farms, Pennsylvania, USA.

Angie Leadman had several good daughters, but the line from May's granddam, Da-Net Patron Pansy, is the most dominant. Unfortunately for her owners Pansy didn't flush very well as a young cow, but this didn't withhold her from producing a few very successful daughters. The Manfred daughter, Brandt-View Manfred Miss Very Good-88 is the dam of the popular proven bull Brandt-View Munster CRI and is also the brood cow behind the successful homozygous polled bull, Ostretin Magua PP *RC.

But the flush to BW Marshall was arguably the most successful, leading to Brandt-View BWM Wendy-ET, who is the brood cow behind the high flush-age polled heifer, Pine-Tree 4890 Casta 5660 *PO and Brandt-View BW Marsh Mia Excellent-90 DOM.

The Mias

The other very successful BW Marshall daughter, Brandt-View Marsh Mia Excellent-90 DOM has proven herself to be a brood cow of the highest standard. Kevin Leaverton owner and breeder of Kevrel Holsteins and Shore Genetics, a private A.I. stud that markets semen worldwide, purchased Mia.

"At the time we did a lot of embryo business, and we really liked the



Kevrel Shottle Mia EX-93 2E
A full sister to Kevrel Shottle May EX-93



Kevrel Colby Missy EX-90 EX-MS
A maternal sister to Memphis at Shore Genetics



Kevrel Man-O-Man 1525 VG-88 EX-MS
Daughter of Kevrel Colby Missy EX-90 EX-MS



Leaderwin Iota Monday VG-87-2YR • GTPI+2320
One of the highest GTPI milking Iota daughters in the U.S.



Leaderwin Obsrvr Memory VG-88-2YR • GTPI+2177
High scoring Observer daughter direct from Kevrel Shottle May



Leaderwin Obsrv Maranda VG-86-2YR DOM • GTPI+2371
No. 1 GTPI Observer daughter in the U.S. (4/14)

family so we decided to purchase her privately as a heifer from breeder, Daniel Brandt,” explains Leaverton.

Unlike her mother, Mia flushed extremely well as a young cow and the lines developed from Mia continue today to be great flush cows according to Leaverton.

Kevin Leaverton, Kevrel/Shore

“Besides the good fertility on the female side, the bulls from this line are also very good semen producers.”

“At the time we were working with a breeder from Denmark that contracted Mia for three flushes and the bulls were selected. Shortly after the flush to Shottle, communication with the breeder became non-existent and none of the embryos sold. It ended up working out very well for us in the end, we got two pregnancies and two females, Kevrel Shottle Mia Excellent-93 and Kevrel Shottle May Excellent-93 DOM,” Leaverton shared.

Leaverton developed many more successful lines from Mia. Mia has Very Good daughters by Oman and Jetstream and Excellent daughters by Colby, Modest and Morty. While the Shottle line is the most popular, for Leaverton the line developed from the oldest daughter of Mia, Kevrel Morty Mia Excellent-90 has been their most profitable. “We have had a lot of success with this line, especially with Morty Mia’s son Memphis.” Sired by Oman, Memphis is the proven bull available through Shore Genetics with a GTPI of +2046.

Shottle May

The story of Kevrel Shottle May Excellent-93 DOM, started when Steve Lantz, Leaderwin Holsteins, visited Leaverton to look at some commercial cows for his brother’s expanding herd.

“While we were there looking at cows and springers, two heifers caught my eye, Kevrel Shottle May and Kevrel Shottle Mia,” Lantz shared.

Lantz absolutely fell in love with May and asked for a price on the young Shottle daughter. “The price of May was a lot of money for us, we had never spent that much money on a cow.” So they thought it over for quite a while before purchasing, and so the story of May be-

gins. This purchase lead to the formation of Leaderwin Holsteins by brothers Steve, James and Emanuel Lantz of Pennsylvania, U.S.

Lantz recalls, “May was in heat the day before we picked her up, we immediately set her up for a flush to Bolivia, resulting in the first May daughter at Leaderwin, Model, and her brother went to A.I.” Today, the offspring is divided up between the Lantz brothers who each have their own farm near Leola, Penn.

Both James and Emanuel are extremely pleased with the offspring. Emanuel shared, “I really like the udder quality and the ease of keeping, they never have problems and continue what they do best, producing milk with great components.”

Steve Lantz, Leaderwin

“I really like the production and the great type that comes with every generation. This family breeds so consistently and they always produce animals that will develop into VG and EX mature cows.”

Shottle May who will be eight in October still holds an impressive +2166 GTPI. She has easily proven herself to be a phenomenal brood cow at Leaderwin with 13 Very good and one Excellent daughter to-date. Scored Excellent-90, Leaderwin Jeeves Mace is one of the earliest daughters of May. Mace is currently the No. 2 GTPI Jeeves daughter in the breed and is following the footsteps of her dam with several high testing daughters and granddaughters. Mace is also the dam of the highest testing bull of the family, Leaderwin Muscadet, a GTPI+2535 Mogul son at Semex. Probably the most well known daughters of Mace are those sired by Observer and Domain.

From the Observer daughters of Mace, Leaderwin Obsrvr Maranda Very Good-86 is the highest indexing with a GTPI of +2371. Maranda is the dam of the No. 1 and No. 2 GTPI Lexor daughters in the breed, Manga GTPI+2509 and Marlene GTPI+2465. While Maranda’s Supersister sister, Leaderwin Super Magical Very Good-86 is the dam to the No. 4 GTPI Lexor daughter in the breed, Leaderwin Lexor Manda GTPI+2451. Maranda also has high testing daughters by Supersire.

Another popular daughter of Mace is the No. 1 GTPI Domain daughter in the breed, Leaderwin Domain Mist Very Good-87 who sold for





Frank Regan, Regancrest Farm on Kevrel Shottle May

“She is one of the best Shottle daughters I have ever seen. She has a tremendous udder and great frame. She was just a two-year-old the first time I had seen her, scored Very Good-89. She was the kind of cow that had the look, pedigree and genomics.”

\$159,000 to Elite Dairy Genomics, Illinois, USA. Mist has three clones owned by Oakfield Corners Dairy, New York, U.S. and Leaderwin. The highest GTPI descendant of the May family is a direct daughter of Leaderwin Domain Mist, EDG Mist Uno Mylife with a sky-high GTPI of +2564. Mylife is owned by Butz-Hill, Elite Dairy Genomics, Don Barry and TJR Genetics, Iowa, U.S. Mist also has high testing daughters by Earnhardt and Latimer while her clones have high daughters by Doorman, Halogen, Johnson and Cabriolet.

A third daughter of Mace with high offspring is Leaderwin OStyle Mistake, who has three high testing daughters by Miles including one at +2438 GTPI.

May's highest daughter, Leaderwin Snowman Mystery, the No. 2 GTPI Snowman daughter, is owned by Regancrest Farms. “Unfortunately we were not successful in acquiring May herself, but fortunately we were able to buy a choice through one of our Command Performance Sales, that choice was Snowman Mystery,” shared Frank Regan, Regancrest Farms, Iowa, U.S.

Regan admires Kevrel Shottle May, “She is one of the best Shottle daughters I have ever seen. She has a tremendous udder and great frame. She was just a two-year-old the first time I had seen her, scored Very Good-89. She was the kind of cow that had the look, pedigree and genomics.”

Mystery has already proven herself to be a great young cow that transmits extremely well. She has a Predestine daughter with a GTPI of +2502 and two sons who just came back with results; a Jacey at +2471 GTPI and a GTPI+2406 polled Ohio Style. Mystery will be pictured and scored in June and is currently on an IVF program. Regan shares, “We also have young March 2014 Goldwyn daughters here from May herself as a result of IVF”

Comparable to her daughter Mace, Observer and Domain also worked very well directly on May. The Observer sisters Leaderwin Observer Matti Very Good-85, Leaderwin Observer Mary Very Good-88 and Leaderwin Observer Memory Very Good-88 have been very popular donors. Woodcrest Dairy, New York, U.S. now owns Matti and she has

a +2408 GTPI Snowmobil daughter at Daisy Farms, Texas, U.S.

Leaderwin Observer Memory was a very popular donor at Leaderwin with several embryos exported to Europe. Leaderwin DG Mythe with a GTPI of +2225 is a result of a successful export and was purchased by Aghavilly Holsteins, Scotland on the Eurogenes Online Heifer Sale in November. Mythe is one of the highest Lithiums in Europe.

“We liked the consistency of this family, and the fact that they had not previously been available in Europe. After our agent had been on a trip to the states, we saw some snapshots of several family members and were impressed with the dairy strength of the older cows and the style of some of the milking heifers. They have also bred well, creating some interesting genomic calves. Since Lithium Melody arrived, we have been pleased with her development. She is a really well balanced, stylish heifer with a great frame and very well grown for her age. She has already been flushed successfully and is again on program,” shared Noel McCarragher, Aghavilly Holsteins.

From the Domain daughters, Leaderwin Domain Miracle Very Good-87 is most admired. Miracle was sold to Clayton Crest Farms, Indiana, U.S. where she has produced several high daughters. Sired by McCutchen, her highest daughter, Claytoncrest Merry Mae carries a GTPI of +2416 and is owned by Siemers Holsteins, Wisconsin, U.S.

Another mating that worked well on May was Iota. From this combination, developed one of the highest Iota daughters in North America, Leaderwin Iota Monday Very Good-87 with a GTPI of +2320.

From the non-milking daughters of May, Watermolen Supersire Marijke is one of the highest and was the first direct daughter of May in Europe. Marijke scores +2336 GTPI and will be on a flush program this summer at Watermolen Holsteins, Netherlands.

Kevrel Shottle May offers what many breeders worldwide are looking for at the moment, high genomics backed by a deep pedigree and a great sire stack. This ideal combination has created a very profitable line for breeders worldwide and the impact of this family is only beginning as the popularity for the Mays continues to grow.

KEVREL SHOTTLE MAY

♀ **Da-Net Bambi Steady VG-87-USA GMD DOM**

(s. Tri-Town Steady Slipper)

♀ **Da-Net Angie Leadman EX-92-USA 2E GMD DOM**

(s. Rothrock Tradition Leadman)

♀ **Da-Net Patron Pansy VG-87-USA GMD DOM**

(s. Brabant Star Patron)

♀ **Brandt-View BW Marsh Mia EX-90-USA DOM**

(s. Mara-Thon BW Marshall)

♀ **Brandt-View BMW Wendy VG-85-USA**

(s. Mara-Thon BW Marshall)

♀ **Brandt-View Manfred Miss VG-88-USA GMD DOM**

(s. Ha-Ho Cubby Manfred)

♀ **Brandt-View Black Beauty VG-85-USA DOM**

(s. Etazon Addison)

♂ **Brandt-View Munster**

(s. Riglio Juror Capri)

♀ **Brandt-View Capri Connie EX-92 2E GMD DOM**

(s. Riglio Juror Capri)

♀ **Ostretin Mia 2 VG-85-CZ**

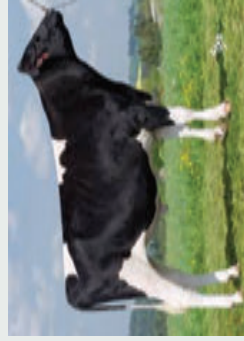
(s. Stouder Morty)

♀ **Ostretin Mia 4 VG-86-CZ**

(s. Stouder Morty)

♂ **Ostretin Magua PP *RC GTPI+1779**

(s. Aggravation Lawn Boy-P Red)



♀ **Kevrel Colby Mia EX-91-USA**

(s. Solid-Gold Colby)

♀ **Kevrel Morty Mia EX-90-USA DOM**

(s. Stouder Morty)

♀ **Kevrel Modest Miami EX-93-USA**

(s. Regancrest-Lh Modest)

♀ **Kevrel Shottlie Mia EX-93-USA**

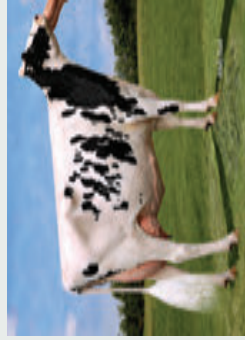
(s. Picston Shottlie)

♀ **Kevrel Performer May GP-83-USA**

(s. Generations Latimer)

♀ **Kevrel Shottlie May EX-93-USA DOM GTPI+2166**

(s. Picston Shottlie)



♀ **Kevrel Performer Missy VG-85-2YR-USA**

(s. Ms Possibility Performer)

♀ **Kevrel Colby Missy EX-90-USA**

(s. Solid-Gold Colby)

♂ **Kevrel Oman Memphis GTPI+2046**

(s. O-Bee Manfred Justice)

♀ **Kevrel Planet Mia EX-90-USA**

(s. O-Bee Manfred Justice)

♀ **Kevrel Manoman Mia EX-90-USA**

(s. O-Bee Manfred Justice)



♀ **Leaderwin Jeeves Mace EX-90 GTPI+2247**

(s. Ked Outside Jeeves)

♀ **Regancrest Mystical GTPI+2502**

(s. Rickland Predestine)

♀ **Regancrest P Mysty GTPI+2370**

(s. Rickland Predestine)

♂ **Regancrest Jc Maverick GTPI+2471**

(s. Coyne-Farms Jacey CRI)

♂ **Regancrest S Mystyle GTPI+2411**

(s. Sandy-Valley Saloon)

♂ **Regancrest Style Myle *PO GTPI+2405**

(s. Pine-Tree Ohio Style P)

♀ **Leaderwin Miles Many GTPI+2429**

(s. Melary Robust Miles)

♀ **Leaderwin Predestn Maple GTPI+2329**

(s. Rickland Predestine)

♀ **Claytoncrest Merry Mae GTPI+2416**

(s. De-Su Bkm McCutchen)

♀ **Claytoncrest Earmhart *PC GTPI+2148**

(s. Da-So-Burn WOM Earnhardt)

♀ **Leaderwin DG Mythe GTPI+2255**

(s. S-S-I Domain Lithium)

♀ **Leaderwin Massey Mum GTPI+2325**

(s. Co-Op Bosside Massey)

♀ **S-S-I Snowmob Matti 10014 GTPI+2408**

(s. Ronelee Snowmobil)

♀ **Manga GTPI+2508**

(s. Generations Lexor)

♀ **Winross Lexor Marlene GTPI+2465**

(s. Generations Lexor)

♀ **Winross Supersire Mindy GTPI+2428**

(s. Seagull-Bay Supersire)

♀ **EDG Mist Uno Mylife GTPI+2564**

(s. Arnighetti Numero Uno)

♀ **EDG Mist Earn 2318 GTPI+2393**

(s. Da-So-Burn WOM Earnhardt P)

♀ **OCD Johnson Missy 9914 GTPI+2347**

(s. Da-So-Burn WOM Earnhardt P)

♀ **OCD Doorman Misty 9953 GTPI+2376**

(s. Val-Bisson Doorman)

♀ **Leaderwin Miles Morgan GTPI+2438**

(s. Melary Robust Miles)

♀ **Leaderwin Lexor Manda GTPI+2451**

(s. Generations Lexor)